

# Scale Sheet

## Clarinet

C Major (Bb Concert)



D Major (C Concert)



Eb Major (Db Concert)



F Major (Eb Concert)



G Major (F Concert)



A Major (G Concert)



Bb Major (Ab Concert)



One-Octave Chromatic Scale

64



68



This section contains two staves of music. The first staff, starting at measure 64, shows an ascending chromatic scale from C4 to C5. The second staff, starting at measure 68, shows a descending chromatic scale from C5 to C4. Both scales are written in a treble clef with a key signature of one sharp (F#).

Chromatic Workout

72



76



80



84



This section contains four staves of music. The first staff (measures 72-75) shows an ascending chromatic scale from C4 to C5. The second staff (measures 76-79) shows a descending chromatic scale from C5 to C4. The third staff (measures 80-83) shows an ascending chromatic scale from C4 to C5. The fourth staff (measures 84-87) shows a descending chromatic scale from C5 to C4. All scales are written in a treble clef with a key signature of one sharp (F#).

All-County Chromatic Scale

88



92



96



This section contains three staves of music. The first staff (measures 88-91) shows an ascending chromatic scale from C4 to C5. The second staff (measures 92-95) shows a descending chromatic scale from C5 to C4. The third staff (measures 96-99) shows an ascending chromatic scale from C4 to C5. All scales are written in a treble clef with a key signature of one sharp (F#).

# Scale Sheet

## Bassoon

### Bb Major (Bb Concert)



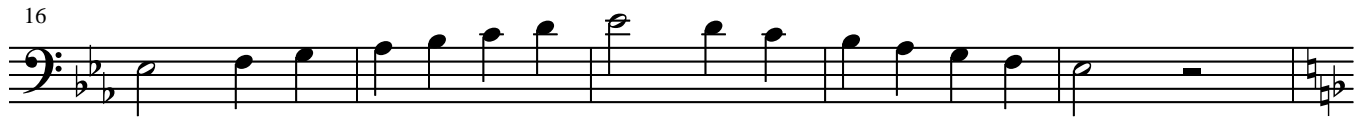
### C Major (C Concert)



### Db Major (Db Concert)



### Eb Major (Eb Concert)



### F Major (F Concert)



### G Major (G Concert)



### Ab Major (Ab Concert)



One-Octave Chromatic Scale

36



40



Chromatic Workout

44



48



52



56



All-County Chromatic Scale

60



64



# Scale Sheet

## Flute

### Bb Major (Bb Concert)



### C Major (C Concert)



### Db Major (Db Concert)



### Eb Major (Eb Concert)



### F Major (F Concert)



### G Major (G Concert)



### Ab Major (Ab Concert)





# Scale Sheet

## French Horn

F Major (Bb Concert)



One-Octave Chromatic Scale

40

44

Chromatic Workout

48

52

56

60

All-County Chromatic Scale

64

68

# Scale Sheet

## Mallet Percussion

### Bb Major (Bb Concert)



### C Major (C Concert)



### Db Major (Db Concert)



### Eb Major (Eb Concert)



### F Major (F Concert)



### G Major (G Concert)



### Ab Major (Ab Concert)







One-Octave Chromatic Scale

48



52



Chromatic Workout

56



60



64



68



All-County Chromatic Scale

72



75



78



# Scale Sheet

## Trombone/Baritone B.C.

### Bb Major (Bb Concert)



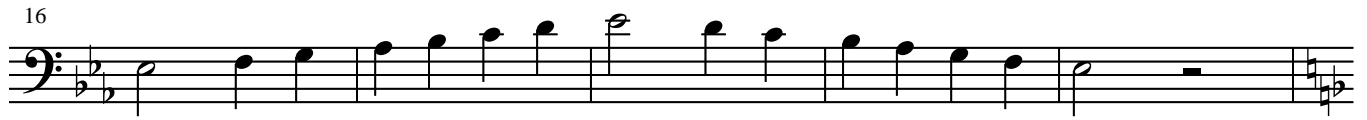
### C Major (C Concert)



### Db Major (Db Concert)



### Eb Major (Eb Concert)



### F Major (F Concert)



### G Major (G Concert)



### Ab Major (Ab Concert)



One-Octave Chromatic Scale

40



44



Chromatic Workout

48



52



56



60



All-County Chromatic Scale

64



68



# Scale Sheet

## Trumpet

C Major (Bb Concert)



D Major (C Concert)



Eb Major (Db Concert)



F Major (Eb Concert)



G Major (F Concert)



A Major (G Concert)



Bb Major (Ab Concert)



One-Octave Chromatic Scale

40



44



Detailed description: This section contains two staves of music. The first staff, starting at measure 40, shows an ascending chromatic scale from C4 to C5 in treble clef, with notes: C, C#, D, D#, E, E#, F, F#, G, G#, A, A#, B, B#, C. The second staff, starting at measure 44, shows a descending chromatic scale from C5 to C4 in treble clef, with notes: C, B, Bb, Ab, G, F, F#, Eb, D, C, Bb, Ab, G, F, E, D, C. Both staves end with a whole note rest.

Chromatic Workout

48



52



56



60



Detailed description: This section contains four staves of music, each with a slur over the notes. The first staff (measures 48-51) is in 6/8 time and shows an ascending chromatic scale from C4 to C5. The second staff (measures 52-55) is in 6/8 time and shows a descending chromatic scale from C5 to C4. The third staff (measures 56-59) is in 6/8 time and shows an ascending chromatic scale from C4 to C5. The fourth staff (measures 60-63) is in 6/8 time and shows a descending chromatic scale from C5 to C4. Each staff ends with a whole note rest.

All-County Chromatic Scale

64



68



Detailed description: This section contains two staves of music. The first staff, starting at measure 64, is in 3/4 time and shows an ascending chromatic scale from C4 to C5. The second staff, starting at measure 68, is in 3/4 time and shows a descending chromatic scale from C5 to C4. Both staves end with a whole note rest.

# Scale Sheet

## Tuba

### Bb Major (Bb Concert)



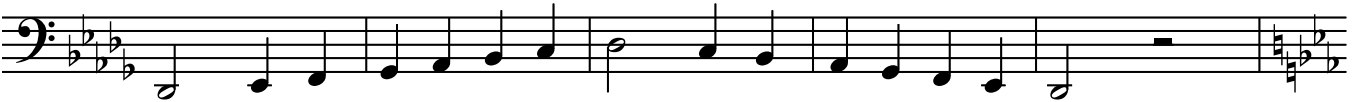
### C Major (C Concert)

6



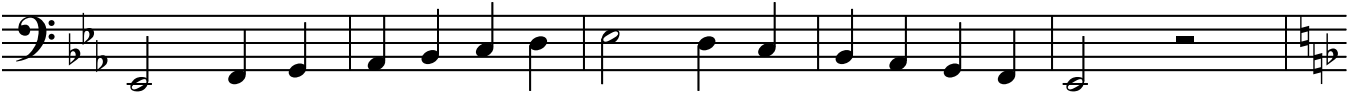
### Db Major (Db Concert)

11



### Eb Major (Eb Concert)

16



### F Major (F Concert)

21



### G Major (G Concert)

30



### Ab Major (Ab Concert)

35



One-Octave Chromatic Scale

40

Measures 40-43: A single staff in bass clef with a key signature of one flat (Bb). The scale starts on G2 and ascends chromatically to G3, ending with a whole rest.

44

Measures 44-47: A single staff in bass clef with a key signature of one flat (Bb). The scale starts on G2 and descends chromatically to G1, ending with a whole rest.

Chromatic Workout

48

Measures 48-51: A single staff in bass clef with a key signature of one flat (Bb) and a 6/8 time signature. The scale starts on G2 and ascends chromatically to G3, ending with a quarter note.

52

Measures 52-55: A single staff in bass clef with a key signature of one flat (Bb). The scale starts on G2 and descends chromatically to G1, ending with a quarter note.

56

Measures 56-59: A single staff in bass clef with a key signature of one flat (Bb). The scale starts on G2 and ascends chromatically to G3, ending with a quarter note.

60

Measures 60-63: A single staff in bass clef with a key signature of one flat (Bb) and a 3/4 time signature. The scale starts on G2 and descends chromatically to G1, ending with a quarter note.

All-County Chromatic Scale

64

Measures 64-67: A single staff in bass clef with a key signature of one flat (Bb) and a 3/4 time signature. The scale starts on G2 and ascends chromatically to G3, ending with a quarter note.

68

Measures 68-71: A single staff in bass clef with a key signature of one flat (Bb). The scale starts on G2 and descends chromatically to G1, ending with a quarter note.

# Scales

## Clarinet

### Bb Major (Ab Concert)



### C Major (Bb Concert)



### D Major (C Concert)



### Eb Major (Db Concert)



### F Major (Eb Concert)



### G Major (F Concert)



### A Major (G Concert)



# Scales

## Flute

### Ab Major (Ab Concert)



Musical notation for the Ab Major scale (Ab Concert). The scale is written on a single staff in treble clef, starting on Ab. It consists of 12 notes: Ab, Bb, C, D, Eb, F, G, Ab, Bb, C, D, Eb. The notation includes a key signature of three flats and a common time signature.

### Bb Major (Bb Concert)



Musical notation for the Bb Major scale (Bb Concert). The scale is written on a single staff in treble clef, starting on Bb. It consists of 12 notes: Bb, C, D, Eb, F, G, Ab, Bb, C, D, Eb, F. The notation includes a key signature of two flats and a common time signature.

### C Major (C Concert)



Musical notation for the C Major scale (C Concert). The scale is written on a single staff in treble clef, starting on C. It consists of 12 notes: C, D, E, F, G, A, B, C, D, E, F, G. The notation includes a key signature of no sharps or flats and a common time signature.

### Db Major (Db Concert)



Musical notation for the Db Major scale (Db Concert). The scale is written on a single staff in treble clef, starting on Db. It consists of 12 notes: Db, Eb, F, G, Ab, Bb, C, Db, Eb, F, G, Ab. The notation includes a key signature of four flats and a common time signature.

### Eb Major (Eb Concert)



Musical notation for the Eb Major scale (Eb Concert). The scale is written on a single staff in treble clef, starting on Eb. It consists of 12 notes: Eb, F, G, Ab, Bb, C, D, Eb, F, G, Ab, Bb. The notation includes a key signature of three flats and a common time signature.

### F Major (F Concert)



Musical notation for the F Major scale (F Concert). The scale is written on a single staff in treble clef, starting on F. It consists of 12 notes: F, G, A, Bb, C, D, E, F, G, A, Bb, C. The notation includes a key signature of one flat and a common time signature.

### G Major (G Concert)



Musical notation for the G Major scale (G Concert). The scale is written on a single staff in treble clef, starting on G. It consists of 12 notes: G, A, B, C, D, E, F#, G, A, B, C, D. The notation includes a key signature of one sharp and a common time signature.

# Scales

## French Horn

Eb Major (Ab Concert)



F Major (Bb Concert)



G Major (C Concert)



Ab Major (Db Concert)



Bb Major (Eb Concert)



C Major (F Concert)



D Major (G Concert)





# Scales

## Saxophone

F Major (Ab Concert)



G Major (Bb Concert)



A Major (C Concert)



Bb Major (Db Concert)



C Major (Eb Concert)



D Major (F Concert)



E Major (G Concert)



# Scales

## Trombone / Baritone B.C.

### Ab Major (Ab Concert)



### Bb Major (Bb Concert)

10



### C Major (C Concert)

19



### Db Major (Db Concert)

28



### Eb Major (Eb Concert)

37



### F Major (F Concert)

46



### G Major (G Concert)

55



# Scales

## Trumpet

Bb Major (Ab Concert)



C Major (Bb Concert)



D Major (C Concert)



Eb Major (Db Concert)



F Major (Eb Concert)



G Major (F Concert)



A Major (G Concert)



# Scales

## Tuba

### Ab Major (Ab Concert)



### Bb Major (Bb Concert)

10



### C Major (C Concert)

19



### Db Major (Db Concert)

28



### Eb Major (Eb Concert)

37



### F Major (F Concert)

46



### G Major (G Concert)

55

