

Trombone II

Lilacs

Gregory Day
2000

3/4

1

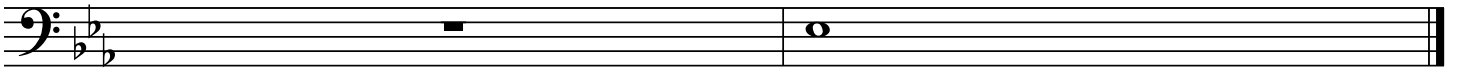
2

a little faster and more articulated

4

C

Lilacs



Trombone I

Lilacs

Gregory Day

2000

2

a little faster and more articulated

2

Lilacs

The image shows a musical staff in bass clef with two flats (B-flat and E-flat). The staff is divided into three measures. The first measure contains a whole note on the G line (G4). The second measure is empty. The third measure contains a whole note on the G line (G4). The title 'Lilacs' is written above the staff, centered over the first measure.

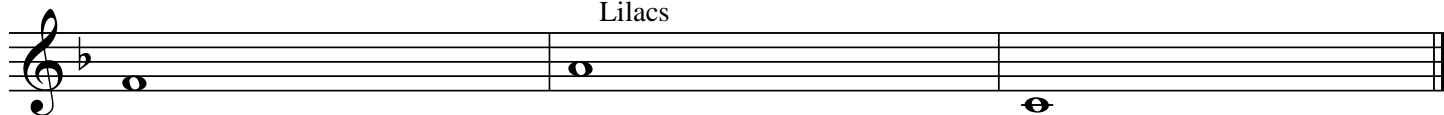
Tpt 2 (Flug)

Lilacs

Gregory Day
2000

a little faster and more articulated

Lilacs



Trt 1

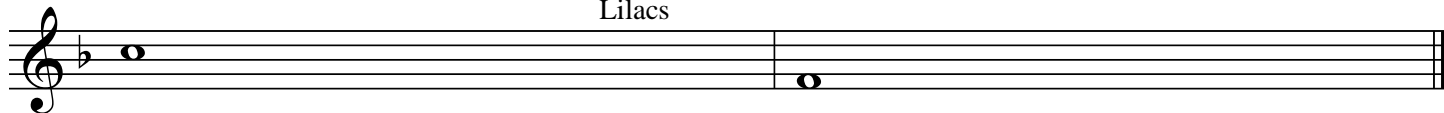
Lilacs

Gregory Day
2000

a little faster and more articulated

5

Lilacs



Hn 2

Lilacs

Gregory Day
2000

The musical score for Horn 2, titled "Lilacs" by Gregory Day (2000), is presented in ten staves. The first five staves are in 3/4 time and feature a melodic line with long slurs. The sixth staff is marked "a little faster and more articulated" and is in common time (C). The remaining four staves continue the melodic line with various articulations and dynamics.

